

Recall / Set up Data Memory

Recall Date stored in PT-U80 then change Date as you want
 Recalled Date is stored into simple report or CSV format

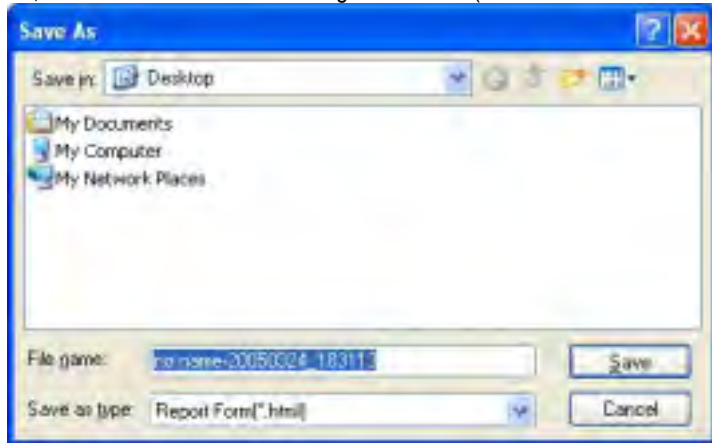
The screenshot shows the 'Thermometer Application' window. It features a menu bar with 'File', 'Edit', 'View', 'Help', and 'About'. Below the menu bar are several buttons: 'Print', 'Copy', 'Paste', 'Delete', 'Refresh', and 'Help'. A 'Memory Analysis' section displays a table of data. At the bottom, there are buttons for 'Select All Memory No.' and 'Unselect All Memory No.'. The Optex logo is visible in the bottom right corner.

Callouts and their corresponding actions:

- Install data from Thermometer:** Points to the 'File' menu.
- Forwarding Data checked in the Check Box:** Points to the 'Forwarding Data' checkbox.
- Store Data List by Report format or CSV file format:** Points to the 'Report' and 'CSV' radio buttons.
- Select Display Value:** Points to the 'Display Value' dropdown menu.
- Check the date you want to store:** Points to the date selection field.
- List for Data Captured From Thermometer:** Points to the data table.
- Log-on Optex Website:** Points to the 'Log-on Optex Website' button.
- Click here to check all items:** Points to the 'Select All Memory No.' button.
- Click here to clear all items checked:** Points to the 'Unselect All Memory No.' button.
- Check items you want to store:** Points to the checkboxes in the data table.
- Display Number of Memorized Data:** Points to the '35' value in the 'Memory Analysis' section.

Sample) Make report form from Date stored into PT-U80

- 1) Connect PT-U80 to PC then activate "THERMO HUNTER" program
- 2) Select "Recall / Set up Data Memory" on TAB
- 3) Push 2 to recall Data Memory from PT-U80
 (Recalling Data Memory automatically starts when visiting Recall and Set Up Data Memory Tab from other Tab)
- 4) Push 3 to see stored dialogue of Data (Refer to below drawing)



5) Select report form from dialogue file then push "Store" to complete

6) Refer to Report Format below. To click "W" located upper-right to edit Report in Microsoft Word

Class No. _____
Serial No. no name _____
Date _____
(Dept.) _____
Author (Name) _____

Mem No.	Mass	Target	Temp. (-C)	Time	Room Temp. (-C)	Max (-C)	MIN (-C)	Notes
1			25.7	2005/01/01 00:00:00				
2			31.5	2005/01/01 00:00:00				
3			21.1	2005/01/01 00:00:00				
4			21.0	2005/01/01 00:00:00				
5			24.7	2005/01/01 00:00:00				
6			17.3	2005/01/01 00:00:00				
7			146.0	2005/01/01 00:00:00				
8			206.5	2005/01/01 00:00:00				
9			126.5	2005/01/01 00:00:00				
10			174.1	2005/01/01 00:00:00				
11								
12								
13								
14								
15								
16								
17								

TASHIKA CO., LTD.

1-12, Kaiyo-cho, Ashiya, 659-0035, JAPAN

Tel: + 81-797-23-9035 Fax: + 81-797-23-2105

e-mail: sales@tashika.co.jp URL: www.tashika.co.jp