

# Isolator

Signal Conditioner with isolated  
Single / Dual Output



Integrated with burnout protection function.

Anti-humid coatings on PCB are standard  
for improved environmental protection.

Drop-proof screw terminals for  
ease of installation.

No special spacing is required  
between the units.

*TASHIKA - to produce  
high quality*



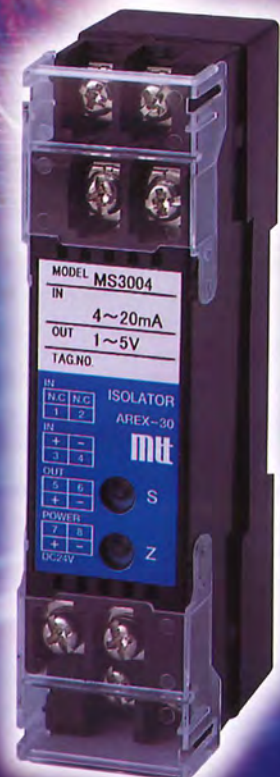
Slim-shaped Plug-in  
Signal Conditioner with isolated  
Single / Dual Output (Isolator)

## MS3700 Series

**MADE IN JAPAN**

Terminal Block Type  
High-level Signal Conditioner  
(Analog Model)

## MS3000 Series



# MS3700 Series Slim Type Plug-in High-grade Signal Conditioners

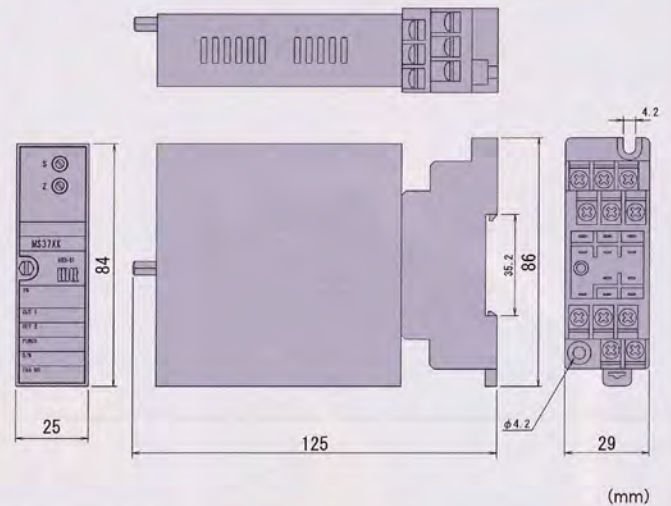
## Specifications

<b>NEW</b> MS3727	Slim Type Plug-in Signal Converter
<b>NEW</b> MS3766H	Slim Type Plug-in Isolated Single Output Analog Memory Converter
MS3701	Slim Type Plug-in Thermocouple Transmitter with Isolated Dual-output (Analog Model)
MS3702	Slim Type Plug-in RTD Transmitter with Isolated Dual-output (Analog Model)
MS3702B	Slim Type Plug-in Isolated Single / Dual Output Resistance Temperature Detector Temperature Converter (Supporting Minute Temperature Span)
MS3703	Slim Type Plug-in Millivolt Isolator with Isolated Dual-output (Analog Model)
MS3704	Slim Type Plug-in High-level Signal Conditioner with Isolated Dual-output (Analog Model)
MS3705	Slim Type Plug-in Two-point Alarm Setter (Digital Setting Model)
MS3705HA	Slim Type Plug-in Two-point High Precision Alarm Setter (Digital Setting Model)
MS3704IS	Slim Type Plug-in Isolated Single Output Isolator
MS3706	Slim Type Plug-in Pressure Transmitter with Isolated Dual-output
MS3707	Slim Type Plug-in Distributor with Isolated Dual-output
MS3708	Slim Type Plug-in Frequency/Analog Converter with Isolated Dual-output
MS3709	Slim Type Plug-in Pulse Shaper with Isolated Dual-output
MS3710	Slim Type Plug-in Potentiometer Transmitter with Isolated Dual-output
MS3711	Slim Type Plug-in Pulse Divider with Isolated Dual-output
MS3713	Slim Type Plug-in Square-root Extractor with Isolated Dual-output
MS3714	Slim Type Plug-in Limiter with Isolated Dual-output
MS3716	Slim Type Plug-in First-order Delay Converter with Isolated Dual-output
MS3717	Slim Type Plug-in Distributor with Isolated Dual-output (With Square-root Extractor)
MS3719	Slim Type Plug-in Single Output Filter Unit (Unisolated between Input and Output)
MS3720	Slim Type Plug-in PT Transmitter with Isolated Dual-output (RMS Operation Model)
MS3721	Slim Type Plug-in PT Transmitter with Isolated Dual-output (RMS Operation Model)
MS3725	Slim Type Plug-in High/Low Selector with Isolated Dual-output
MS3728	Slim Type Plug-in Tacho-generator Converter with Isolated Dual-output
MS3729	Slim Type Plug-in Tacho-generator Converter with Isolated Dual-output
MS3737	Slim Type Plug-in Distributor with Non-isolated Dual-output
MS3737LC	Slim Type Plug-in Distributor with Non-isolated Dual-output (Low Cost Model)
MS3738	Slim Type Plug-in Manual Setter with Isolated Dual-output
MS3739	Slim Type Plug-in Ratio Transmitter with Isolated Dual-output (Output Bias Model)
MS3739IB	Slim Type Plug-in Ratio Transmitter with Isolated Dual-output (Input Bias Model)
MS3740	Slim Type Plug-in Reverser with Isolated Dual-output
MS3743	Slim Type Plug-in Reverser with Isolated Dual-output
MS3744	Slim Type Plug-in High-level Signal Conditioner with Isolated Dual-output (Wide Band Model)
MS3749	Slim Type Plug-in Isolated Single / Dual Output Pulse Shaper (Pulse Isolator)

## Specifications

MS3761	Slim Type Plug-in Analog Adder with Isolated Dual-output
MS3762	Slim Type Plug-in Analog Subtractor with Isolated Dual-output
MS3763	Slim Type Plug-in Analog Subtractor with Isolated Dual-output
MS3764	Slim Type Plug-in Loop-powered Isolator (Two Channels in One)
MS3765	Slim Type Plug-in Isolated Single / Dual Output Arithmetic Operator
MS3766	Slim Type Plug-in Isolated Single Output Analog Memory Converter
MS3767	Slim Type Plug-in Isolated Single Output Temperature Compensation Operator
MS3768	Single Output Type: Slim Type Plug-in Isolated Single Output Function Unit (Linearizer) (Specification Program Configurable)
	Dual Output: Single Plug-in Isolated Dual Output Function Unit (Linearizer) (Specification Program Configurable)
MS3771	Slim Type Plug-in Thermocouple Transmitter with Isolated Dual-output (Software Configurable Model)
MS3772	Slim Type Plug-in RTD Transmitter with Isolated Dual-output (Software Configurable Model)
MS3773	Slim Type Plug-in Millivolt Isolator with Isolated Dual-output (Software Configurable Model)
MS3774	Slim Type Plug-in High-level Signal Conditioner with Isolated Dual-output (Software Configurable Model)

## Dimensional outline drawing

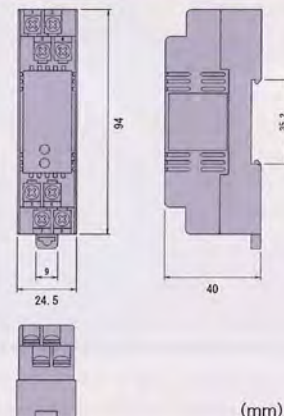


# MS3000 Series Terminal Block Type High-grade Signal Conditioners

## Specifications

MS3001	Terminal Block Type Thermocouple Transmitter (Analog Model)
MS3002	Terminal Block Type RTD Transmitter (Analog Model)
MS3003	Terminal Block Type Millivolt Isolator (Analog Model)
MS3004	Terminal Block Type High-level Signal Conditioner (Analog Model)
MS3007	Terminal Block Type Isolated Distributor
MS3008	Terminal Block Type Frequency/Analog Converter
MS3010	Terminal Block Type Potentiometer Transmitter
MS3020	Terminal Block Type CT Transmitter (RMS Operation Model)
MS3021	Terminal Block Type PT Transmitter (RMS Operation Model)
MS3044	Terminal Block Type Isolated Single Output DC Signal Converter
MS3064	Terminal Block Type Loop-powered Isolator

## Dimensional outline drawing



## TASHIKA CO., LTD.

1-12, Kaiyo-cho, Ashiya, 659-0035, JAPAN

Tel: + 81-797-23-9035 Fax: + 81-797-23-2105

e-mail: sales@tashika.co.jp URL: www.tashika.co.jp