

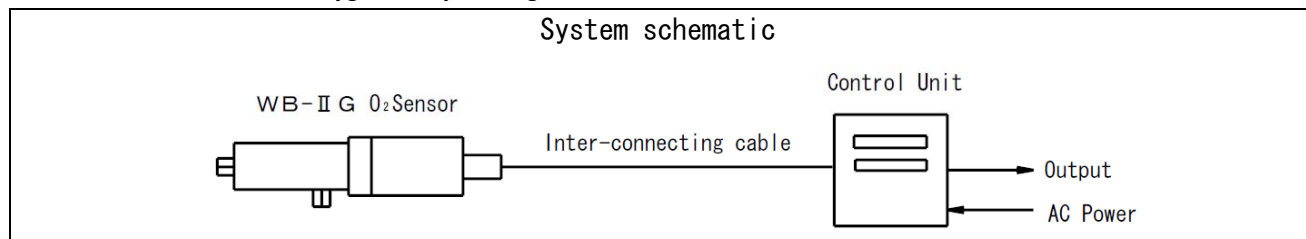
Zirconia Sensing Oxygen Sensor WB-II G



What's WB-II G

Detective element is made of Zirconia electrolyte.

※ The sensor works as oxygen analyzer together with the control unit.



Features

- ◎ Several accessories with each object facility.
- ◎ Built-in multi-filter protects detector from dirt and corrosion.
- ◎ Simple structure, easy maintenance.
- ◎ It is possible to measure CO₂+H₂ at the fuel surplus time. (display as “- O₂%”)

Application

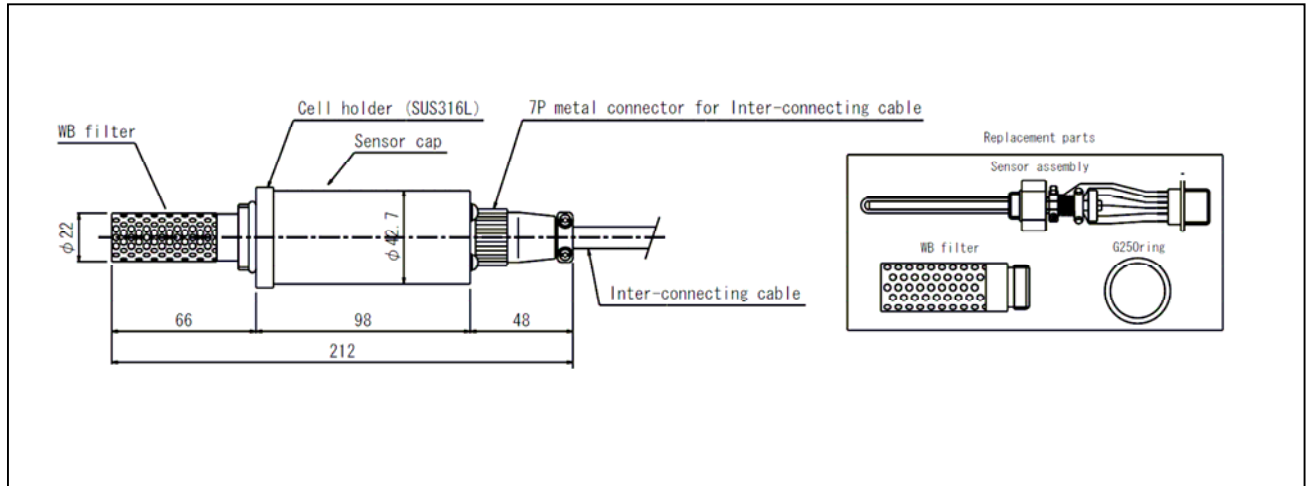
Boiler, Steel heating furnace, Glass fusion furnace, Ceramic sintering furnace, Waste heat plant,
All burning exhaust gases.

Specification

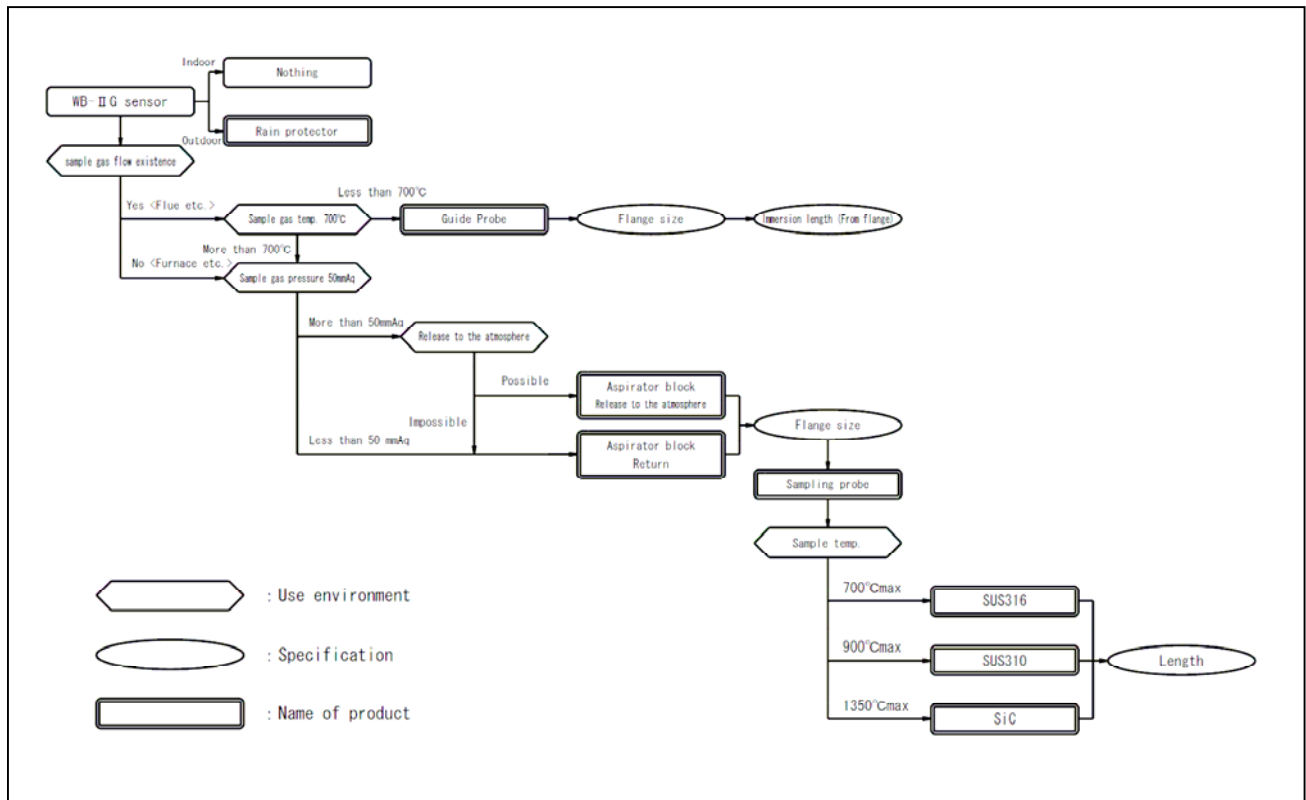
| | |
|-----------------|---|
| Measuring Range | -20~25%, |
| Linearity | Less than ±1%FS (0-25%O ₂) |
| Repeatability | Less than ±1%FS (0-25%O ₂) |
| Response | 90% reading 10sec. (Swinging to a high density side) |
| Drift | Less than ±2%FS/week |
| Sample suction | With aspirator block, Guide probe |
| Sample pressure | 0±5KPa (It depends on accessory) |
| Sample Temp. | 300°C MAX. (Sensor part only) 0~700°C(In case of Guide Probe use) , 0~1500°C(In case of Aspirator Block use) |
| Warm up time | About 20 minutes |
| Option | Rain protector |

※For the improvement, the specification and design may be changed without prior notice.

Dimensions



The choice flow chart of the accessories



TASHIKA CO., LTD.

1-12, Kaiyo-cho, Ashiya, 659-0035, JAPAN

Tel: + 81-797-23-9035 Fax: + 81-797-23-2105

e-mail: sales@tashika.co.jp URL: www.tashika.co.jp